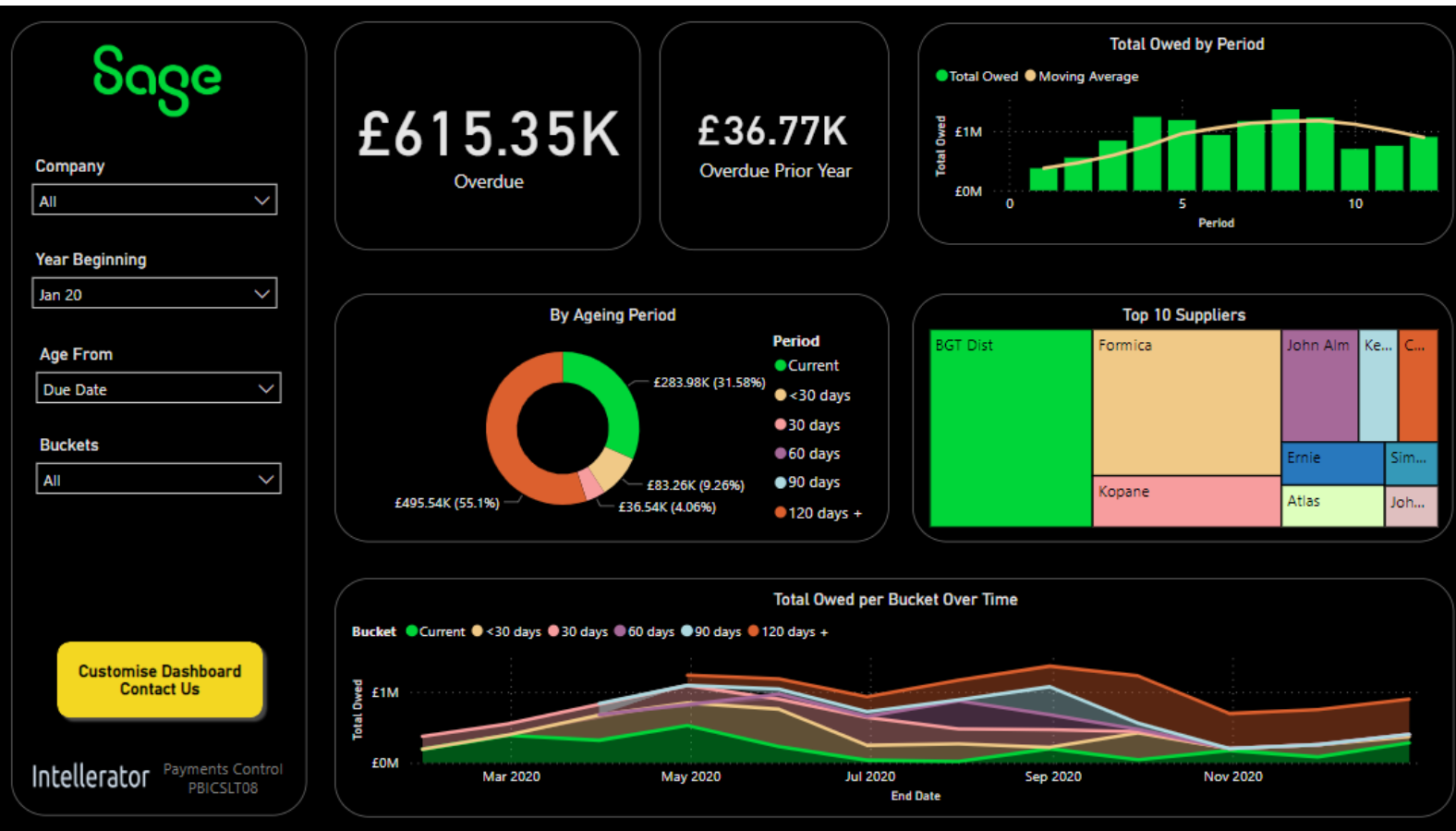


Intellerator

Business Intelligence For Sage 200



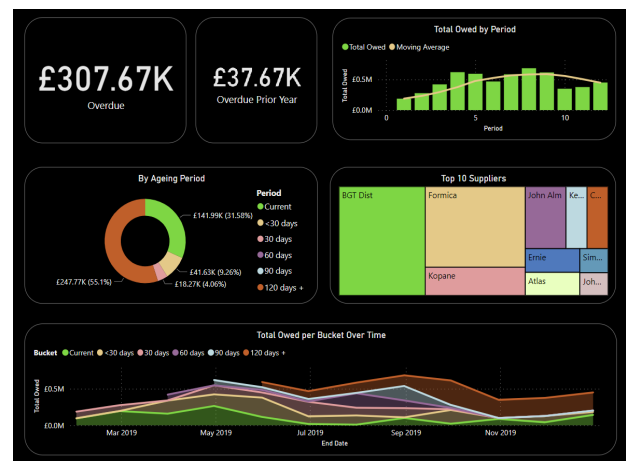
Contents

Intellerator	3
The power of vision	3
Lenses	4
Nominal Transactions	5
Financial Statements	6
Sales	7
Purchases	8
Credit Control	9
Payment Control	10
Stock Valuation	11
What is Power BI?	12
Incredible pricing	13
Our customers	13
How we develop Intellerator	14
Contact us	16

Intellerator

Business Intelligence For Sage 200

Are you looking to improve your Sage 200 reporting? Meet Intellerator: Microsoft Power BI dashboards for Sage 200 providing powerful, interactive reports of your financial data. Identify trends, spot opportunities, and make informed decisions while incorporating up to date data from other systems. Ditch the PDFs, upgrade to Intellerator today and discover the perfect partnership between Microsoft Power BI and Sage 200.



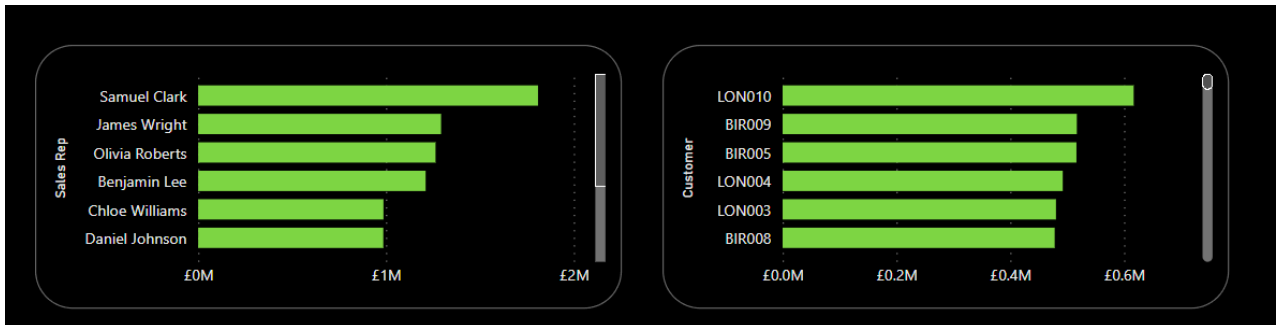
The Power Of Vision

- ✓ **Interactively report on Sage 200** - From financials through to commercials.
- ✓ **Reports across all Sage 200 companies** - See all the total over all companies and filter to specific companies.
- ✓ **Cross system reporting** - Report on all your Sage 200 data and also data from other third party systems.
- ✓ **Dynamic filtering** - Filter an entire report just by clicking a drop down or a bar in a chart.
- ✓ **Drill down** - We can see exactly what transactions make up any chart at any time using the transactions table.
- ✓ **Output to excel** - We can output the transactions to excel for further analysis and to amend data via [Excelerator](#).
- ✓ **Customisable refresh** - Refresh manually or on a schedule
- ✓ **Fully customisable** - [Contact us](#) now to tailor any reports to your needs

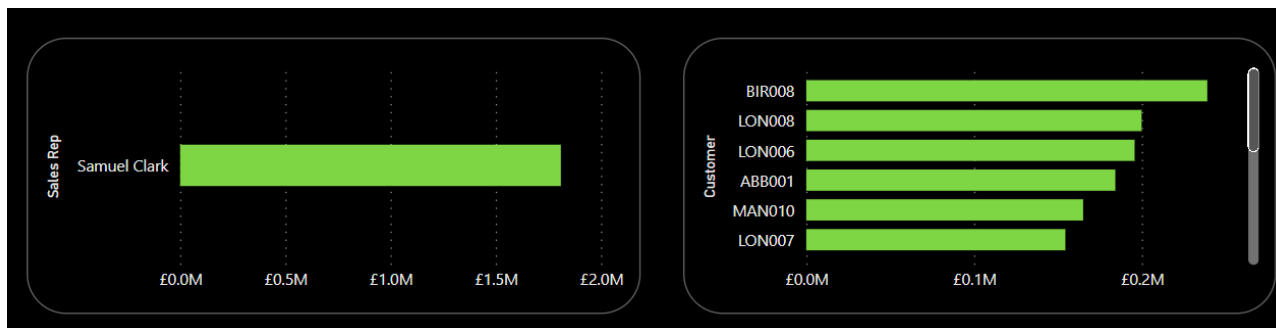


Lenses

Two sides of the same coin



Sales manager can see sales figures and top customers across the company and for each sales rep



Sales manager can see sales figures and top customers across the company and for each sales rep

With Intellerator Lenses, different users access the same link and see only the Sage 200 data that you allow them to see, fully configurable from Sage 200. Imagine your:

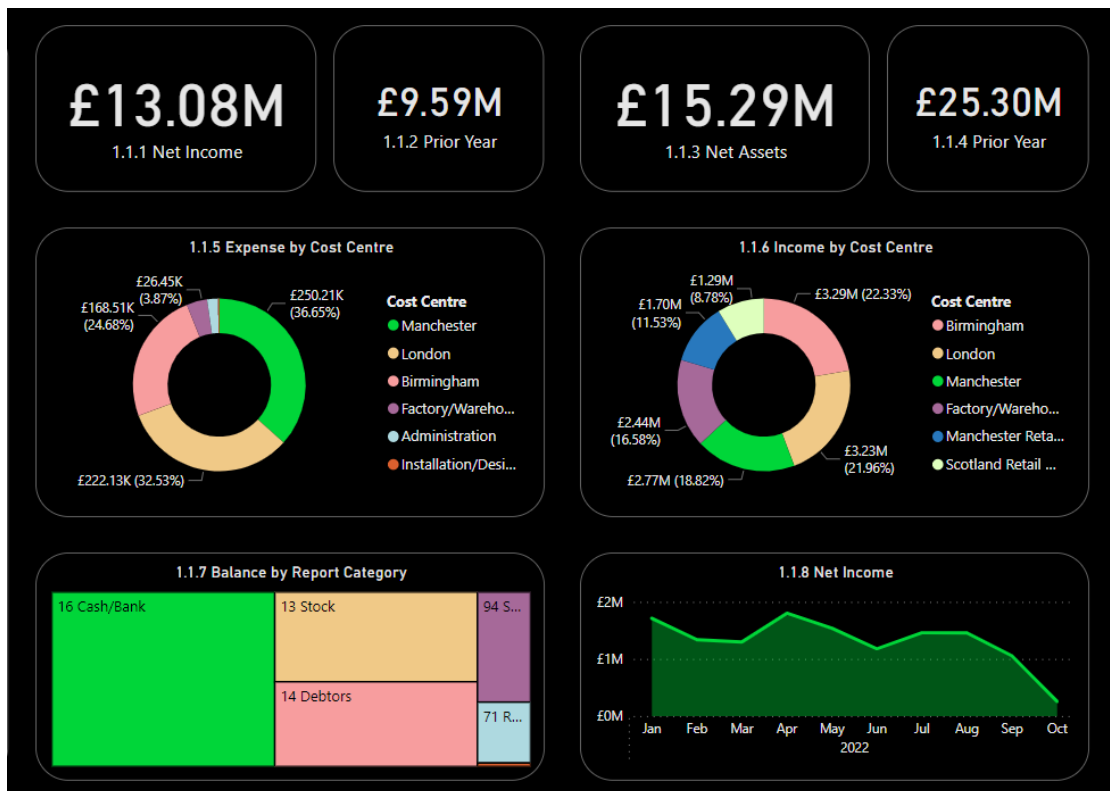
- ✓ sales reps being able to view only their sales figures
- ✓ cost centre managers only seeing their cost centre's profit and loss statements
- ✓ department managers only seeing their department's nominal transactions

While the financial manager sees the big picture with all data. Say goodbye to different versions of spreadsheets everywhere, and discover a single source of truth with Intellerator.

Feature Rich Pre-built Dashboards

Nominal Transactions

- View your Sage 200 nominal transactions across all companies, including current, deferred and waiting nominal transactions.
- At a glance KPIs including:
 - ✓ Net income, this year vs prior
 - ✓ Net income over time
 - ✓ Net assets, this year vs prior
 - ✓ Income and expenditure by cost centre
 - ✓ Transaction balance by report categories



- Detailed analysis of:
 - ✓ Balance by report category, nominal code, cost centre. Department and nominal account
 - ✓ A running balance over time. This can be filtered by any of the above
 - ✓ In detailed transaction table across all companies, filterable by any of the above
- Lenses on Department Managers, Cost Centre Managers and Finance Managers

Financial Statements

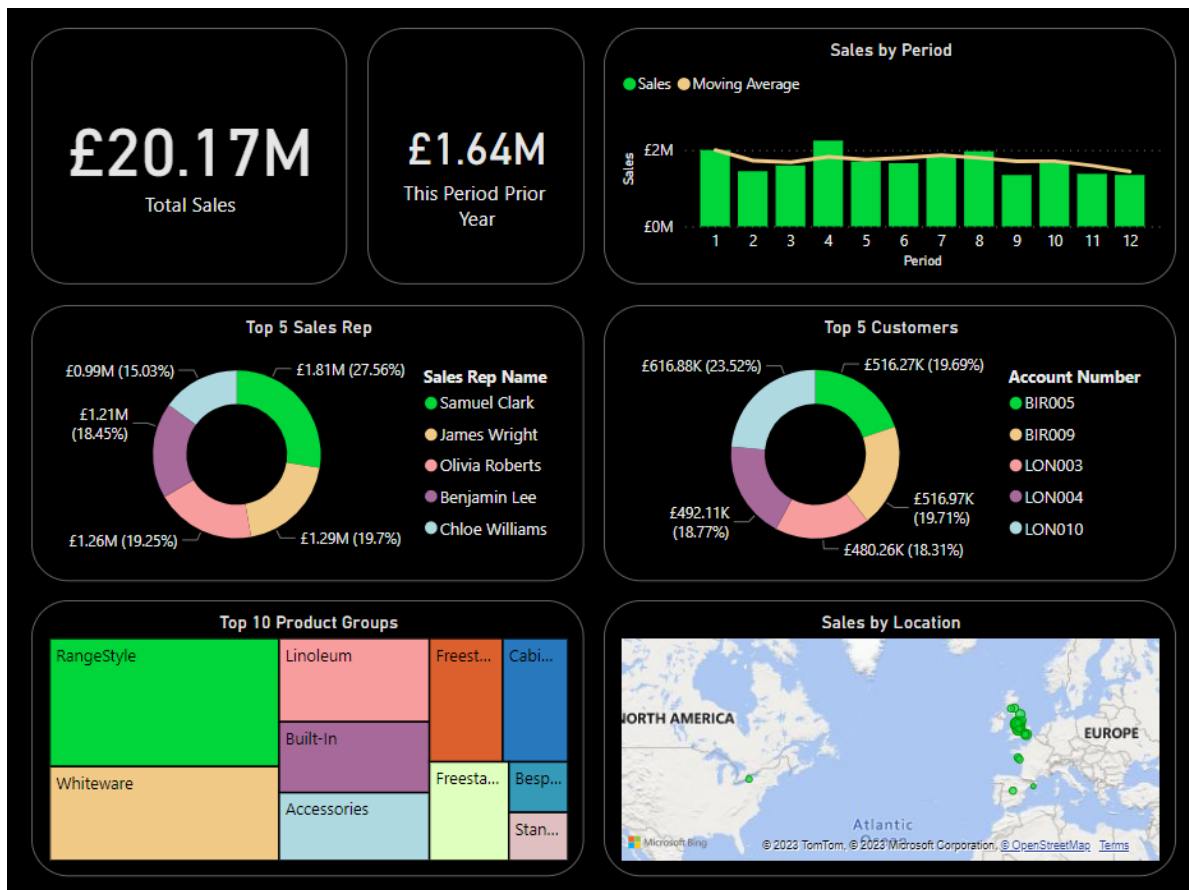
- See all profit and loss statements and balance sheets that you have set up in Sage 200.
- Ditch the PDFs and interactively filter on:
 - ✓ Company
 - ✓ Net assets, this year vs prior
 - ✓ Financial year and period
 - ✓ Departments

	This Period		Year To Date	This Period
Fixed Assets				
Freehold Property			747,000.00	
Leasehold Property				
Plant & Machinery	23,657.14		34,609.12	
Fixtures & Fittings			11,663.19	
Vehicles			32,642.77	
Total Fixed Assets	23,657.14		825,915.08	
Current Assets				
Stock & Work in Progress	276,904.63		201,348.92	
Debtors	(793,475.01)		(581,146.19)	
Bank & Cash	708,338.86		1,017,975.40	
Prepayments			1,125.00	
Total Current Assets	191,768.48		639,303.13	
Total Assets		215,425.62		1,465,218.21
Current Liabilities				
Creditors	(724,997.73)		(415,983.02)	
Vat	73,634.91		66,856.57	

- Fully configurable: Need to add or remove a report line? No problem, as this dashboard works straight from the financial statement layouts in Sage 200.
- Lenses on Cost Centre Managers, Department Managers and Finance Managers

Sales

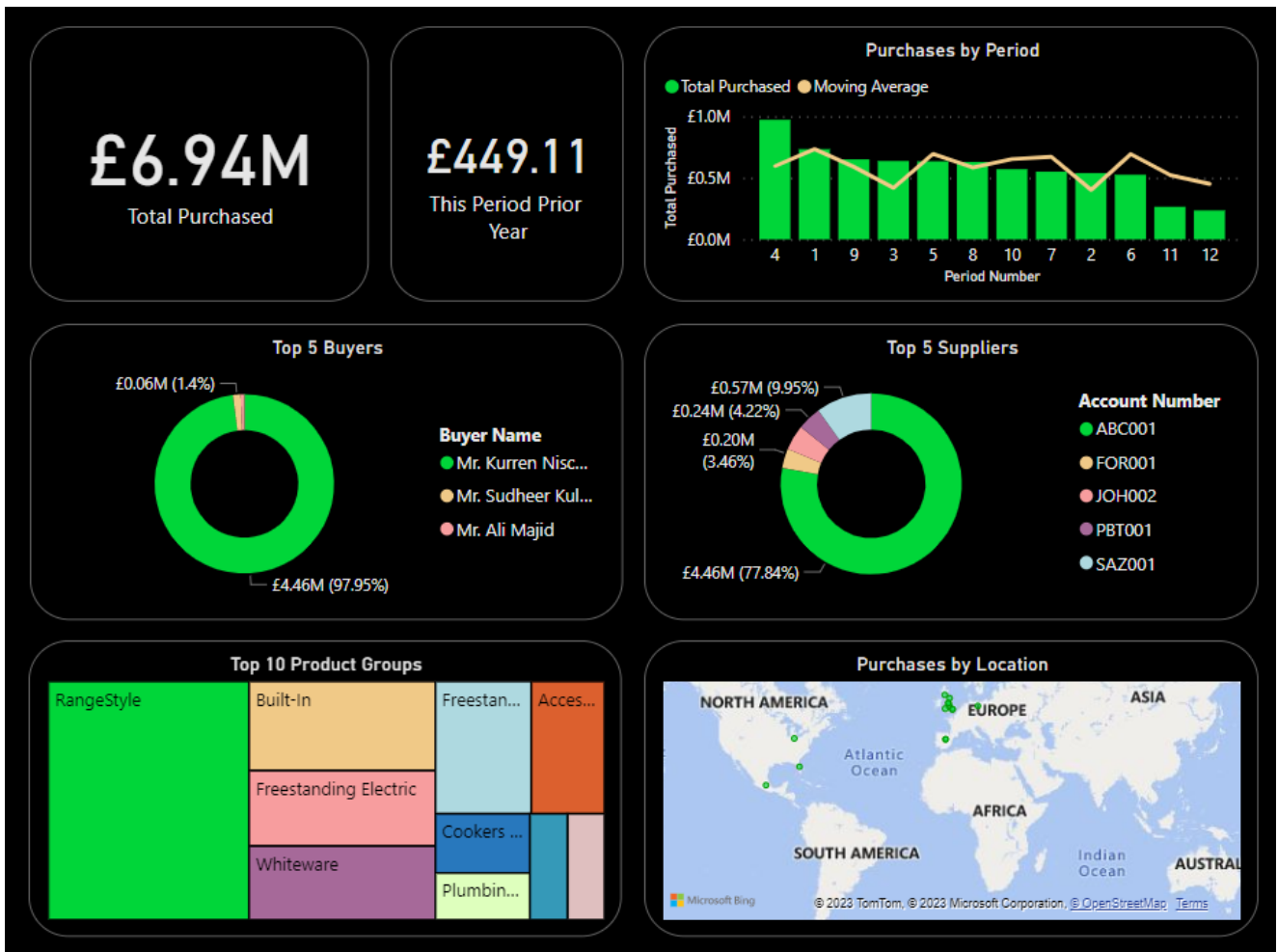
- Sales figures totalled across all companies
- Sales reps can be set up in Sage 200
- At a glance KPIs include
 - ✓ Total Sales
 - ✓ Sales by period
 - ✓ Top 5 customers
 - ✓ Sales by location
 - ✓ This period prior year
 - ✓ Top 5 sales representatives
 - ✓ Top 10 product groups



- Detail analysis of:
 - ✓ Sales by company
 - ✓ Sales by product group
 - ✓ Sales by customers
 - ✓ Sales by product
 - ✓ Sales by representatives
 - ✓ Drill down to individual sales
- Filter any chart by any other. For example, click on a product and instantly see the top customers of that product.
- Lenses on Sales Reps and Sales Managers

Purchases

- Purchase figures totalled across all companies
- Buyers can be set up in Sage 200
- At a glance KPIs include
 - ✓ Purchases by period
 - ✓ Top 5 suppliers
 - ✓ Purchases by location
 - ✓ Top 5 buyers
 - ✓ Top 10 product groups



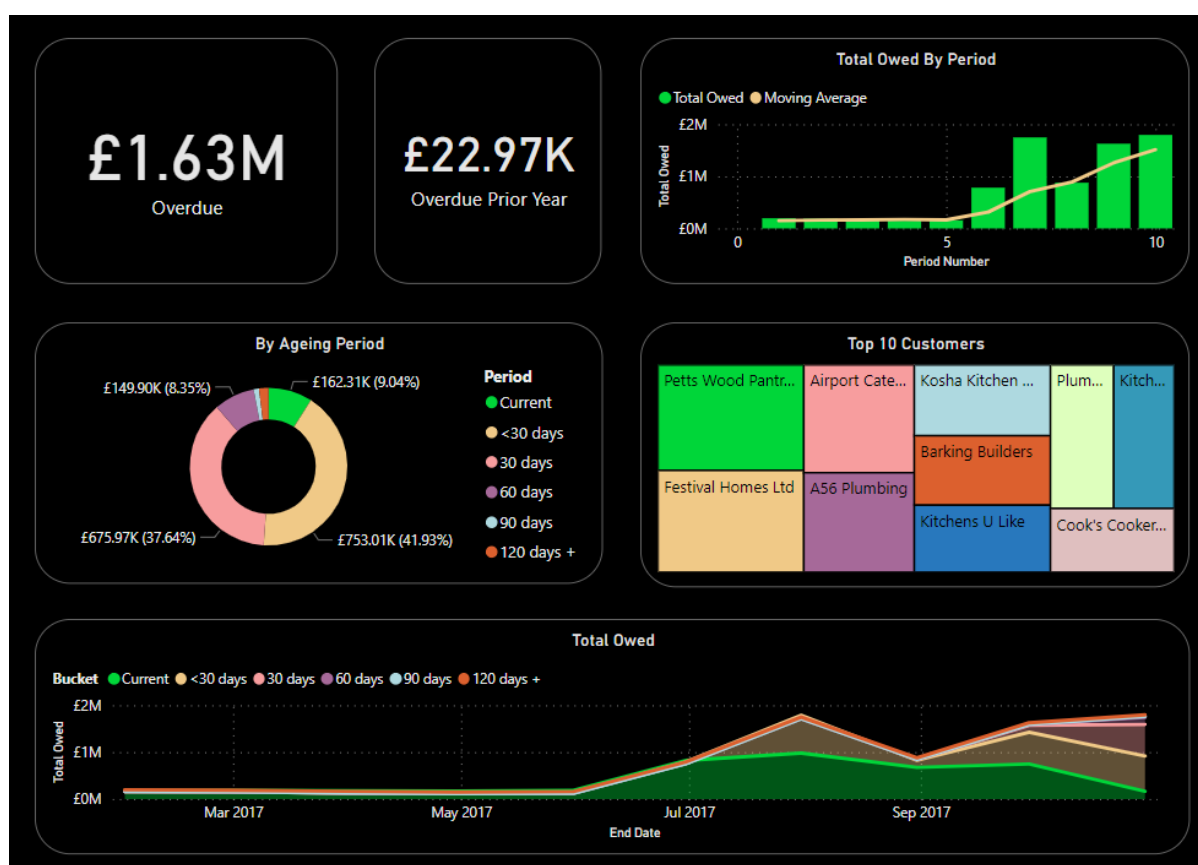
- Detail analysis of:
 - ✓ Purchases by company
 - ✓ Purchases by group
 - ✓ Purchases by buyer
 - ✓ Total purchases
 - ✓ Purchases by supplier
 - ✓ Drill down to individual purchases
- Filter any chart by any other. For example, click on a product and instantly see the top customers of that product.
- Lenses on Buyers and Purchase Managers

Credit Control

- Your upgraded, fully integrated Sage 200 aged debtors report
- Uses the ageing periods you set up in Sage 200
- See the total you are owed over time for each ageing period.
- Works with sales in foreign currencies, including foreign currency revaluations
- At a glance KPIs include

- ✓ Total owed by period
- ✓ Top 10 customers

- ✓ By ageing period
- ✓ Total owed



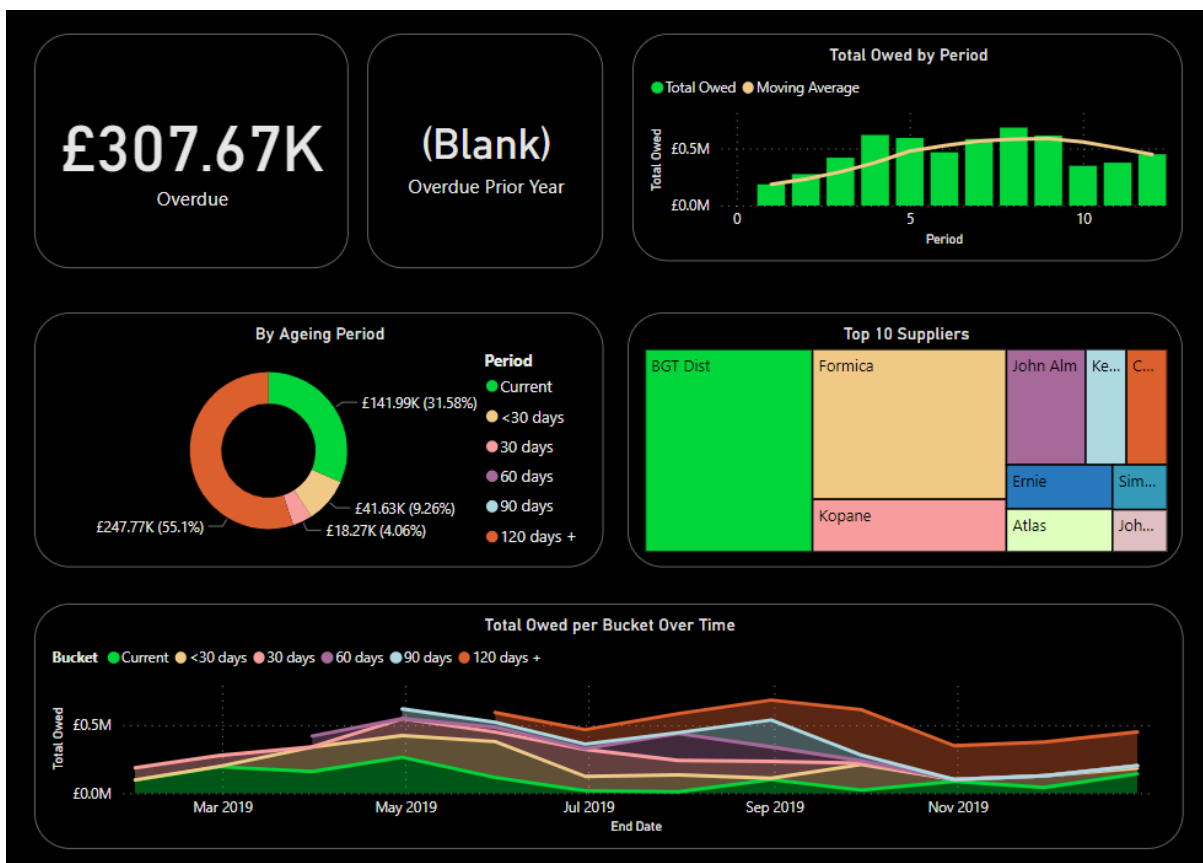
- Detail analysis of:
 - ✓ Total owed by company
 - ✓ Total owed by customer
 - ✓ Drill down to individual sales invoices, receipts and foreign currencies revaluations
 - ✓ Total owed by financial year
 - ✓ Total owed by nominal account
- Filter any chart by any other. For example, click on a financial period and instantly see the customer that owed the most at that point, for each ageing period.
- Lenses on Sales Reps (account managers) and Sales Managers

Payments Control

- Your upgraded, fully integrated Sage 200 aged creditors report
- Uses the ageing periods you set up in Sage 200
- See the total you are owed over time for each ageing period.
- Works with purchase in foreign currencies, including foreign currency revaluations
- At a glance KPIs include

- ✓ Total owed by period
- ✓ Top 10 suppliers

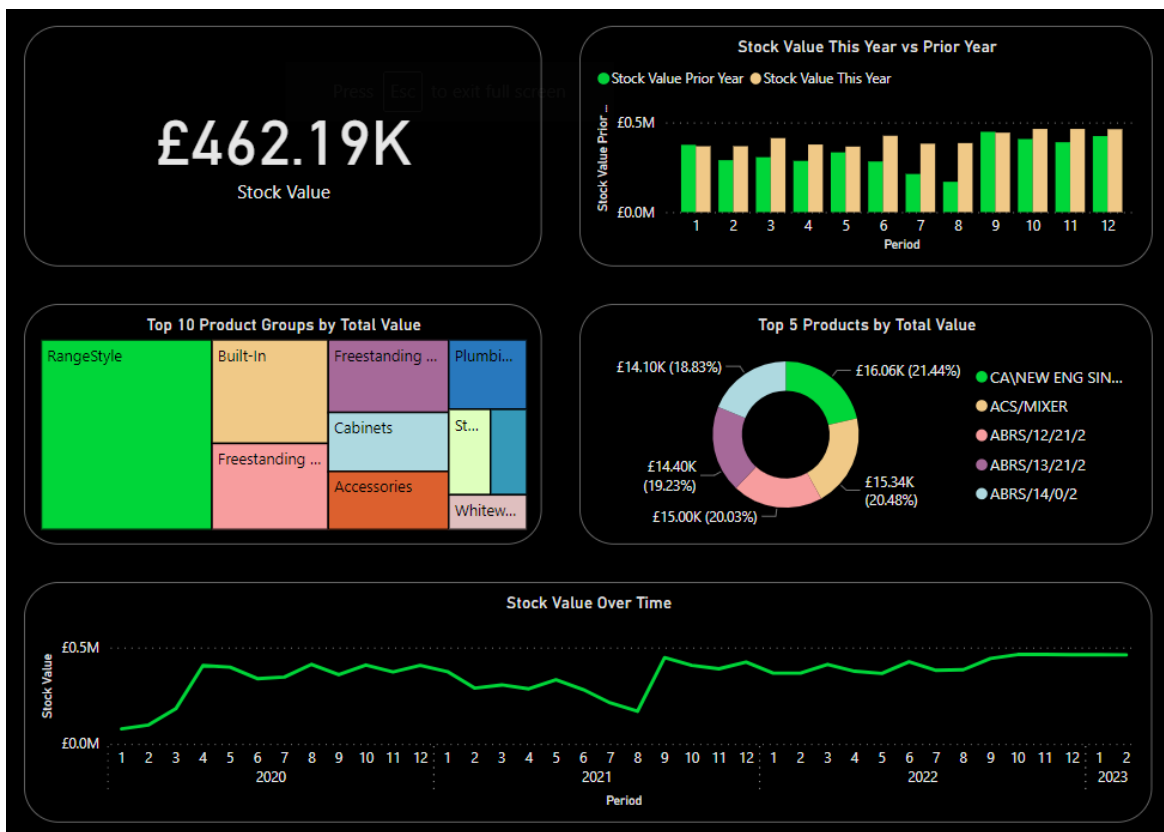
- ✓ By ageing period
- ✓ Total owed per ageing period over time



- Detail analysis of:
 - ✓ Total owed by company
 - ✓ Total owed by financial year
 - ✓ Total owed by supplier
 - ✓ Total owed by nominal account
 - ✓ Drill down to individual purchase invoices, payments and foreign currencies revaluations
- Filter any chart by any other. For example, click on a financial period and instantly see the customer that owed the most at that point, for ageing period.
- Lenses on Buyers and Purchase Managers

Stock Valuation

- Your upgraded, fully integrated Sage 200 Stock valuation report
- See your stock valuation trend over time
- Works with First In First Out (FIFO), Standard and Average costing methods
- At a glance KPIs include
 - ✓ Stock value
 - ✓ Top 10 product groups by total value
 - ✓ Stock value over time
 - ✓ Stock value (current year vs prior)
 - ✓ Top 5 products by total value



- Detail analysis of:
 - ✓ Stock value by period
 - ✓ Stock value by product group
 - ✓ Stock value by product
 - ✓ Drill down to individual transactions, including changes in the standard cost of stock items where the standard costing method is used
- Filter any chart by any other. For example, click on a financial period and instantly see the customer that owed the most at that point, for each ageing period.
- Lenses on Buyers and Purchase Managers

What is Power BI?

Intellerator is built on Microsoft Power BI. Developed by Microsoft, it is the world's most popular business intelligence and data visualization tool. With its intuitive interface and powerful features, Power BI has become a popular choice for businesses seeking to unlock insights and drive business growth through data.



Data Visualization

Power BI enables users to transform raw data into interactive visualizations such as charts, graphs, and maps.



Interactive Dashboards

With Power BI, you can create interactive dashboards that consolidate data from multiple sources into a single, unified view.



Easy Data Integration

Power BI seamlessly integrates with a wide range of data sources, including databases, spreadsheets, cloud services, and online applications.



Mobile Access

Power BI provides mobile apps for iOS and Android, enabling users to access dashboards and reports on the go.



Microsoft Fabric

Data analytics for the era of AI. Microsoft continue to make substantial investments, and this sets Power BI to be the clear leader now and into the future.

Incredible Pricing

Only £15 per user per month

£15 per month gives access to the full Intellerator suite of pre-built dashboards. Discover more about each dashboard below. Volume discounts may be available, enquire now.

Our customers

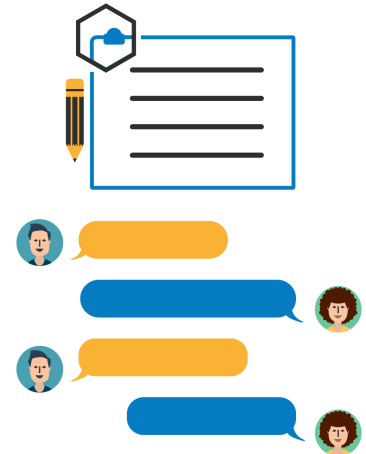


How we develop Intellerator

At Codis, we believe in transparency, precision, and professionalism when it comes to crafting your Power BI dashboards. Discover how we turn your Sage 200, Sage 1000, SAP and other accounting data into actionable insights with unparalleled accuracy.

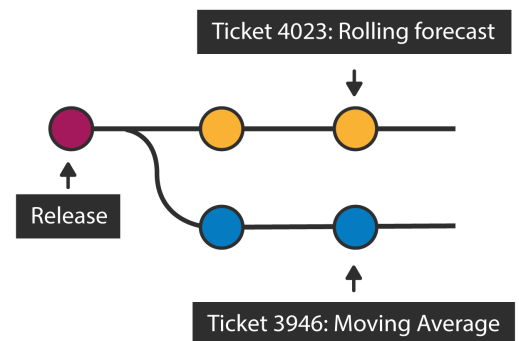
1. Ticket created and discussed

Each feature in the dashboard is discussed individually, from the technical details down to the user interface.



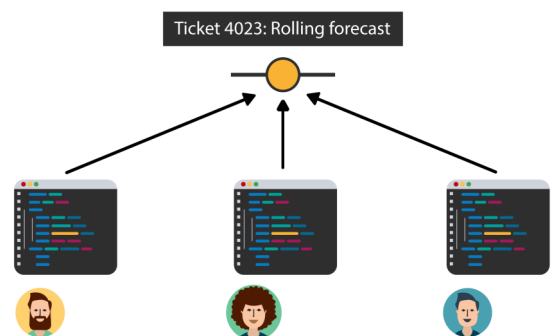
2. A branch created for the ticket

Each feature is designed in its own “branch” of the dashboard, a process known as “Source Control”. It allows a team of people to work on multiple features at once.



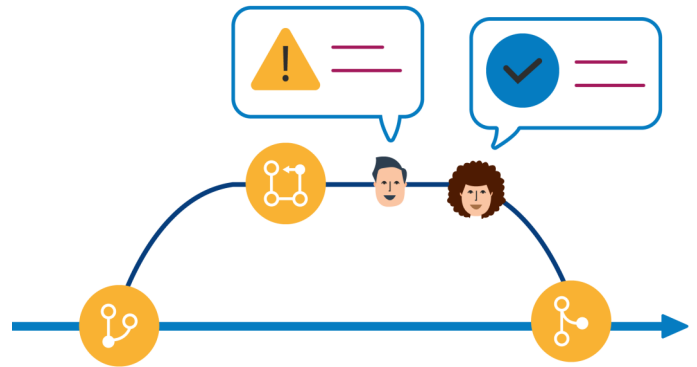
3. Dashboard is designed (usually by multiple people) using mainly code editors.

Power BI Desktop is great, however it does not allow a close control over what is going on in the dashboard. Using code editors, multiple team members can configure and optimise the dashboard to exact specifications.



4. Branch is reviewed, and if accepted it is merged.

The feature will not be included with any live dashboards until it is reviewed and tested it to the highest standards by a separate team to the dashboard developers. Only then is the feature accepted ("merged") into the live dashboard.



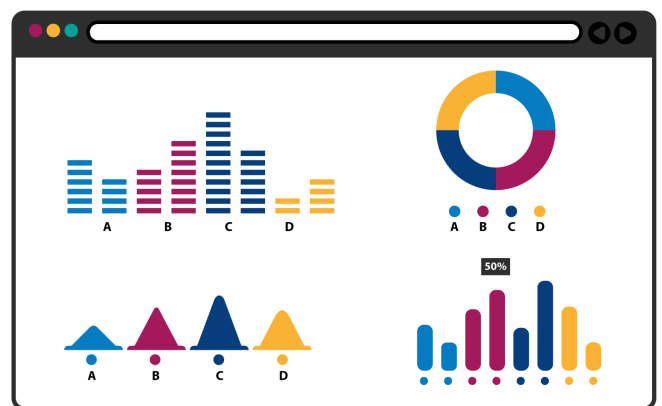
5. Build is triggered.

Upon merging, the new live Power BI dashboard is packaged up and sent to the cloud.



6. Latest dashboard is deployed to the app, viewable in a URL.

All users can immediately see the new features of the dashboard. No installers to run, no restarting PCs, just one seamless upgrade.



Shard Office

Codis Ltd
24/25 The Shard
London
SE1 9SG



Contact

sales@codis.co.uk
020 88 610 610
www.codis.co.uk



codis.co.uk



sales@codis.co.uk



[/codis](https://www.linkedin.com/company/codis)



[@codislimited](https://twitter.com/codislimited)



[/codisuk](https://www.youtube.com/channel/UC...)